

Daily Derivatives & Market Report

CONTENTS

Page No.	Particulars
2	Market Summary
3	Nifty Futures – Derivatives Snap
4	Bank Nifty Futures – Derivatives Snap
5	Activity in Nifty Options
6	What do Nifty Technical suggest
7	Derivative Analysis
8	Disclaimer

Index Trend Analysis

Pivot(Daily)	Close	S2	S1	Pivot	R1	R2	Daily	Weekly	Monthly
Nifty	10855	10704	10780	10825	10901	10946	Buy	Sell	Buy
Sensex	36213	35722	35967	36109	36355	36496	Buy	Sell	Buy
Nifty Futures	10873	10708	10791	10847	10930	10986	Buy	Neutral	Neutral
Bank Nifty	27720	27283	27502	27628	27847	27973	Buy	Buy	Buy
CNX IT	14326	13995	14160	14328	14494	14662	Neutral	Neutral	Neutral
CNX Midcap	17621	17404	17513	17618	17727	17833	Neutral	Neutral	Neutral
CNX Small Cap	6389	6310	6350	6392	6431	6473	Neutral	Neutral	Sell

Market Summary

Domestic Indices	Close	Points	% Chg
SENSEX	36212.9	232.0	0.6
NIFTY	10855.2	53.0	0.5
MIDCAP	15121.6	-5.6	0.0
SMLCAP	14601.0	-24.1	-0.2
BSEFMC	11886.6	130.7	1.1
AUTO	20076.9	109.0	0.6
POWER	1974.9	-5.6	-0.3
REALTY	1862.1	12.2	0.7
BSE IT	14084.9	45.5	0.3
BANKEK	31166.5	214.1	0.7
OILGAS	13276.7	-235.5	-1.7
METAL	11149.7	-137.1	-1.2

Currency Futures	Close	Pre. Pts	% Chg
29-Jan-19 EUR-INR	81.00	80.66	0.42
29-Jan-19 USD-INR	70.65	70.34	0.43
29-Jan-19 GBP-INR	90.01	89.77	0.26
29-Jan-19 JPY-INR	64.94	64.81	0.20

Advance/ Decline	Adv	Dec	Un Ch.
NSE	717	1059	127
BSE	1108	1490	149

FII/DII Capital Mkt*	Buy	Sell	Net
FII	4410	4134	276
DII	3659	3219	440

*NOTE: - FII AND DII data figure is provisional

Market Commentary

Last hour rally helped Indian equity benchmarks to close Wednesday's trading session with strong gains. After a firm start, the key indices remained upbeat for the most part of the session, as the World Bank forecasted that Indian economy is expected to grow at 7.3% in the current fiscal year 2018-19 (FY19) and will grow further at average 7.5% in the following two years. It also said that India registered quite a bit of pick up in doing business ranking. Adding some optimism, the finance ministry said that the recovery of evaded indirect taxes shot up in 2018-19, after a low in 2017-18, the year when the goods and services tax (GST) was implemented. Recovery as a percentage of the evaded taxes dropped from 26% in 2016-17 to 14% in 2017-18. Then, it went up to 29% in 2018-19 (April to December period). Some support also came with a report stating that the central government has released Rs 48,202 crore as GST compensation to states during April-November 2018, higher than the Rs 48,178 crore paid in the previous financial year.

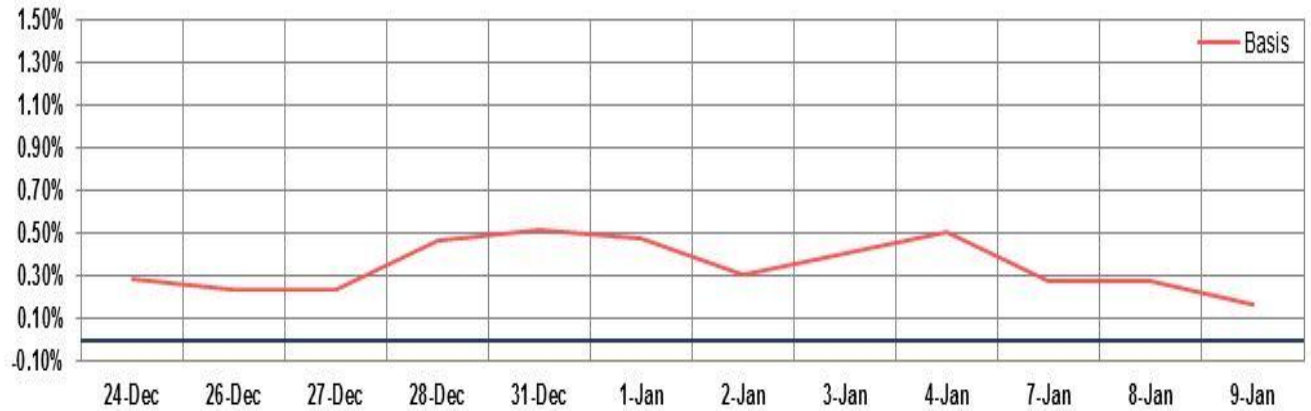
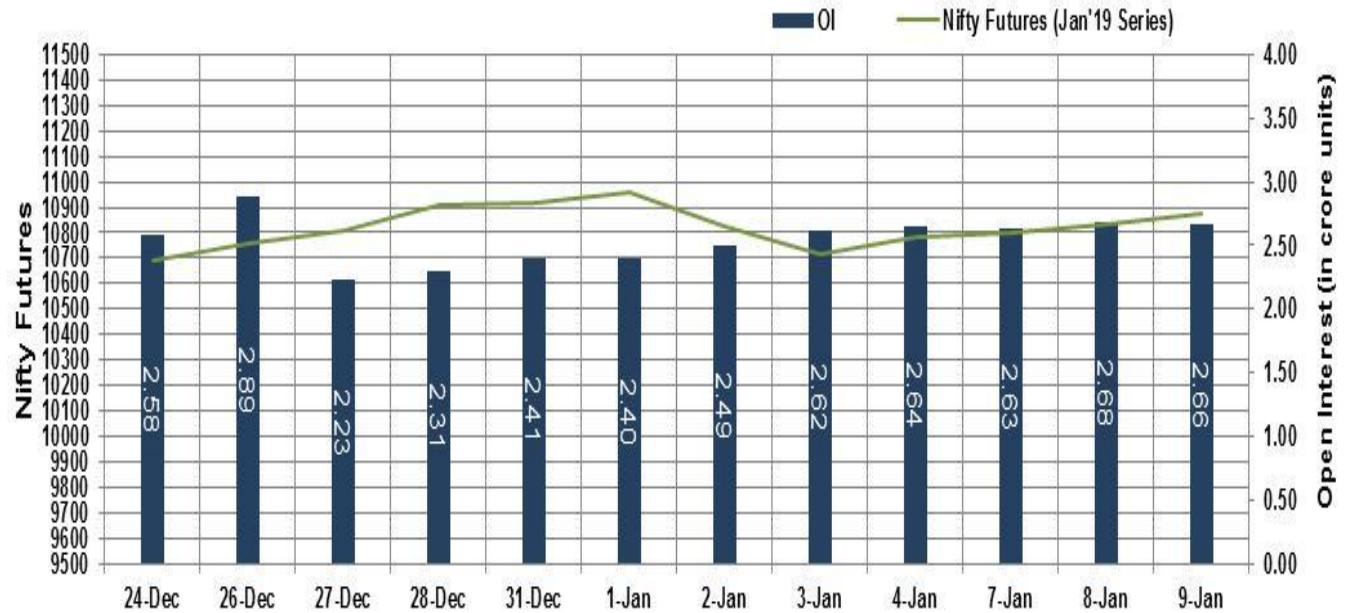
On the global front, European markets were trading in green, even though Eurozone's economic sentiment index decreased more-than-expected in December to its lowest level since the start of 2017. The survey data from the European Commission showed that the economic sentiment index dropped to 107.3 from 109.5 in November. The street had predicted a score of 108.2. Besides, Germany's industrial production unexpectedly cut for a third straight month in November, amid a sharp fall in consumer goods and energy output, worsening fears of a technical recession in the biggest euro area economy.

Market Turnover & FII Derivative Data

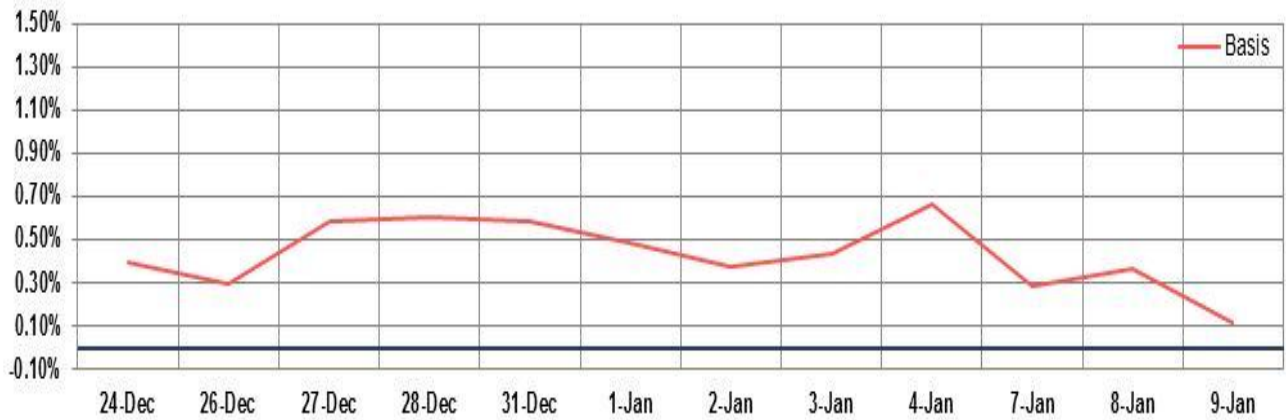
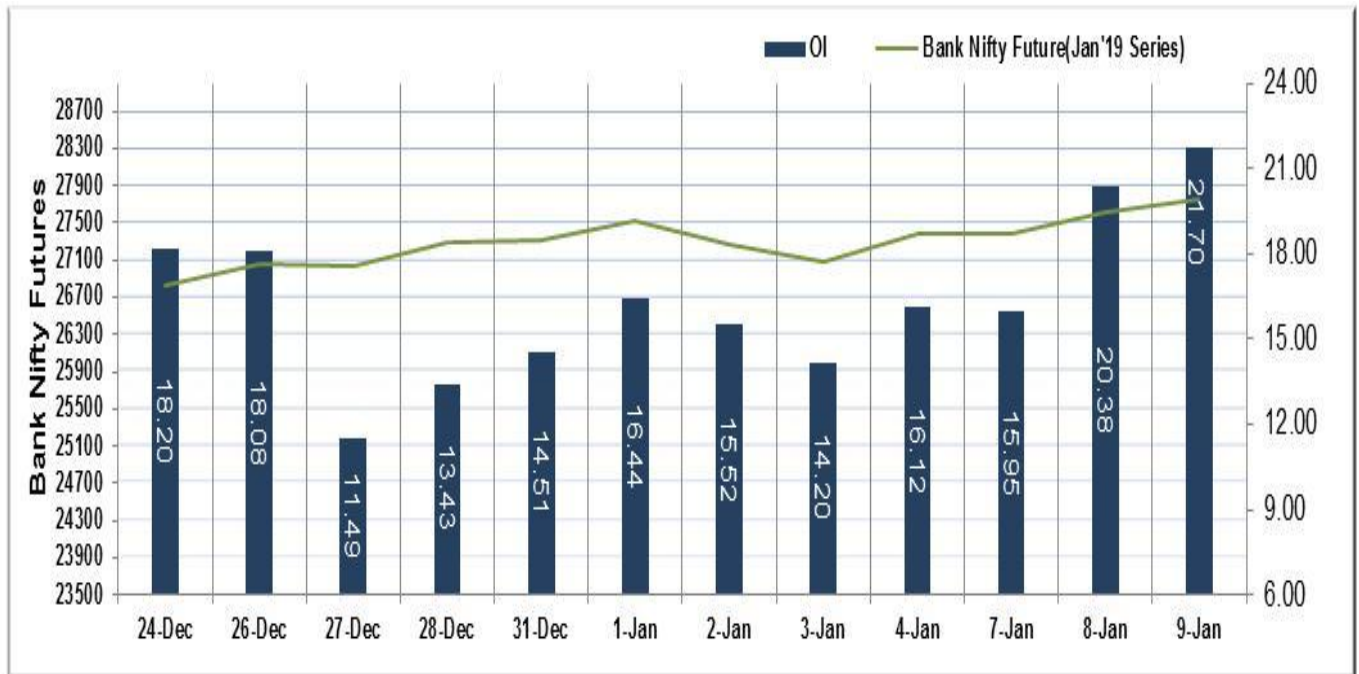
Market TO	Current	Previous	Net%
BSE CASH	2833	2498	13
NSE CASH	29800	26091	14
NSE FO	1117242	728442	53

FII Derivatives	Buy	Sell	Net
Ind. Futures	3810	3349	460
Ind. Options	129124	127875	1249
Stk. Futures	12378	12744	(366)
Stk. Options	7126	7090	36

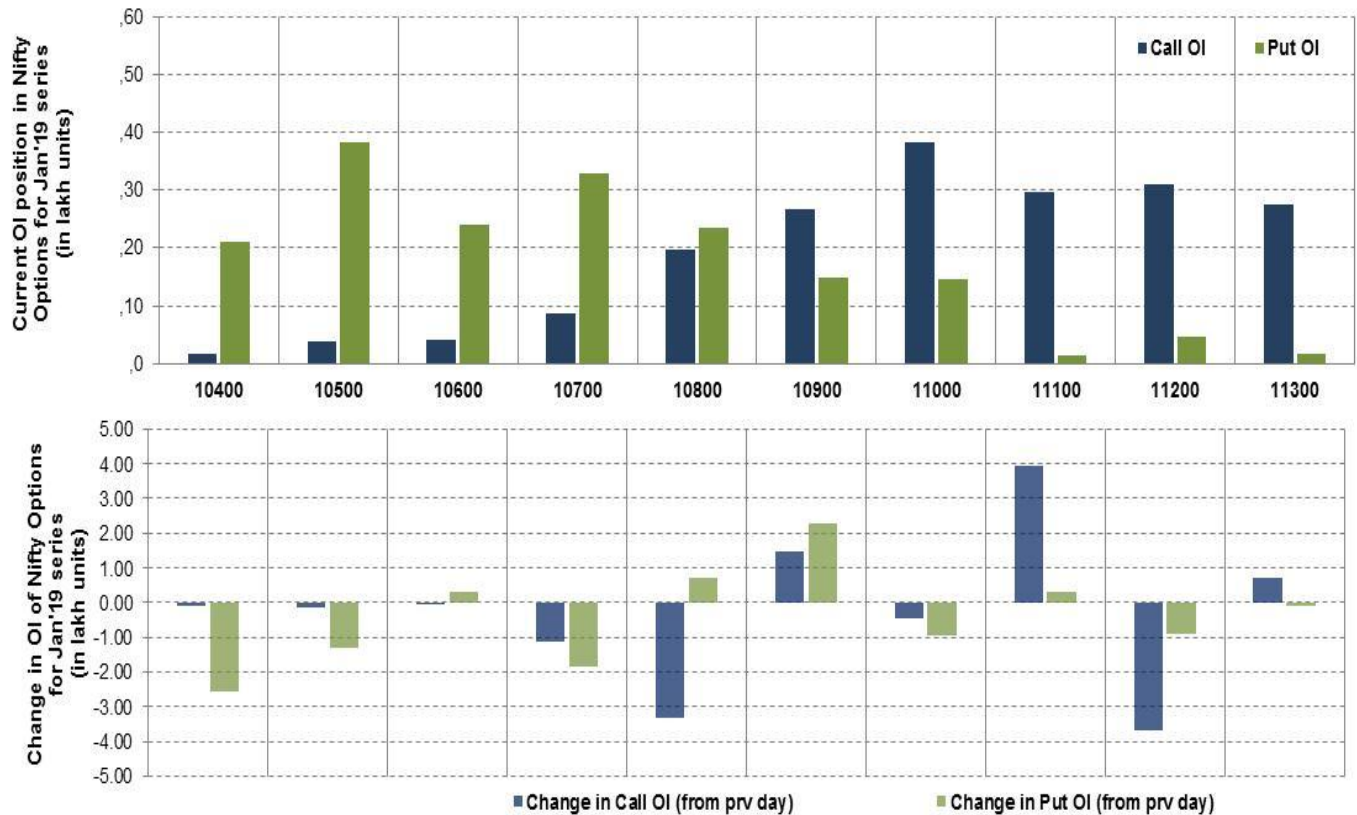
Nifty Futures



Bank Nifty Futures



Nifty Options

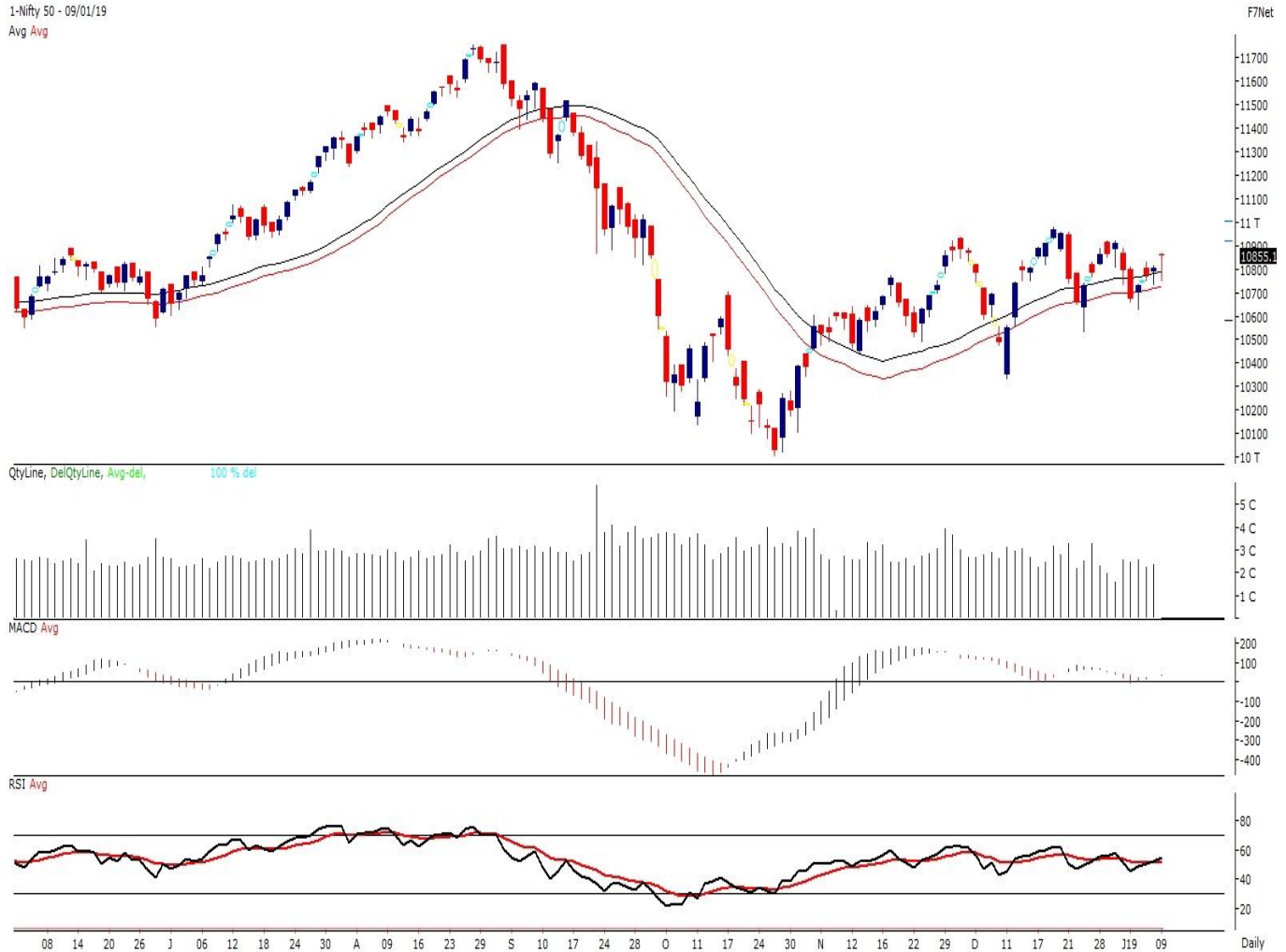


Note – Change in OI of Nifty Options refers to change from previous trading day
 Source-NSE, SIHL Derivatives Research (Institutional Equities)

- Among Nifty calls 11,000 SP from the Jan month expiry was the most active call with a reduction of 0.05 million in open interest.
- Among Nifty puts, 10,500 SP from the Jan month expiry was the most active put with a reduction of 0.13 million open interests.
- The maximum OI outstanding for Calls was at 11,000 SP (3.81mn) and that for Puts was at 10,500 SP (3.83mn)

Nifty Technical & Indices Levels

1-Nifty 50 - 09/01/19
 Avg Avg



Nifty Cash prices have settled at 10855.15 up by 0.49 percent from the previous close. On the upper side it has resistance of 10900 and 10950 levels, while lower side it has support of 10800 and 10750 levels. Intraday traders should be cautious and take position accordingly.

Fresh Longs ↑ Open Interest ↑ Price					
Script	Prev. OI	Cur. OI	% Chg. OI	LTP	Price % Chg
SREINFRA	12,252,000	14,796,000	20.76	36.30	1.68
INDUSINDBK	7,868,400	8,910,900	13.25	1607.20	1.39
AXISBANK	35,608,800	39,888,000	12.02	671.55	2.94
BATAINDIA	2,107,600	2,356,750	11.82	1147.70	1.49
Short-Covering ↓ Open Interest ↑ Price					
Script	Prev. OI	Cur. OI	% Chg. OI	LTP	Price % Chg
PEL	2,599,012	2,566,396	-1.25	2344.45	0.93
BALKRISIND	2,758,400	2,708,800	-1.80	889.70	1.97
EICHERMOT	406,875	396,450	-2.56	20420.00	1.53
SRTRANSFIN	3,951,000	3,849,000	-2.58	1218.00	1.68
Fresh Shorts ↑ Open Interest ↓ Price					
Script	Prev. OI	Cur. OI	% Chg. OI	LTP	Price % Chg
CHENNPETRO	1,213,200	1,440,000	18.69	268.60	-4.21
ZEEL	13,544,700	15,562,300	14.90	453.85	-0.11
RAMCOCEM	693,600	784,800	13.15	618.70	-2.52
L&TFH	19,264,500	21,726,000	12.78	145.55	-2.45
Long Unwinding ↓ Open Interest ↓ Price					
Script	Prev. OI	Cur. OI	% Chg. OI	LTP	Price % Chg
SYNDIBANK	23,670,000	22,965,000	-2.98	40.90	-2.27
TORNTPOWER	2,622,000	2,508,000	-4.35	262.00	-0.85
BEML	1,621,900	1,550,500	-4.40	912.80	-1.03
ORIENTBANK	13,041,000	12,453,000	-4.51	99.40	-2.17

Disclaimer:

The Information provided by SMS or in newsletter or in any document has been prepared by Shah Investor's Home Ltd (SIHL). The Information provided by SMS or in newsletter does not constitute an offer or solicitation for the purchase or sale of any financial instrument or as an official confirmation of any transaction. The information contained herein is from publicly available data or other sources believed to be reliable, but we do not represent that it is accurate or complete and it should not be relied on as such. SIHL or any of its affiliates/ group companies shall not be in any way responsible for any loss or damage that may arise to any person from any inadvertent error in the information contained in this report or SMS. This Information provided by SMS, reports or in newsletter is provided for assistance only and is not intended to be and must not alone be taken as the basis for an investment decision. The user assumes the entire risk of any use made of this information. Each recipient of this Information provided by SMS, report or in newsletter should make such investigation as it deems necessary to arrive at an independent evaluation of an investment in the securities of companies referred to in this information provided by SMS, report or in newsletter (including the merits and risks involved), and should consult his own advisors to determine the merits and risks of such investment. The investment discussed or views expressed may not be suitable for all investors. This information is strictly confidential and is being furnished to you solely for your information.

The information should not be reproduced or redistributed or passed on directly or indirectly in any form to any other person or published, copied, in whole or in part, for any purpose. The information provided by report or SMS is not directed or intended for distribution to, or use by, any person or entity who is a citizen or resident of or located in any locality, state, country or other jurisdiction, where such distribution, publication, availability or use would be contrary to law, regulation or which would subject SIHL and affiliates/ group companies to any registration or licensing requirements within such jurisdiction. The distribution of this Information provided by SMS or in newsletter in certain jurisdictions may be restricted by law, and persons in whose possession this Information provided by SMS or in newsletter comes, should inform themselves about and observe, any such restrictions. The information given or Information provided by SMS, report or in newsletter is as of the date of the issue date of report or the date on which SMS provided and there can be no assurance that future results or events will be consistent with this information. This information is subject to change without any prior notice. SIHL reserves the right to make modifications and alterations to this statement as may be required from time to time. However, SIHL is under no obligation to update or keep the information current.

Nevertheless, SIHL is committed to providing independent and transparent recommendation to its client and would be happy to provide any information in response to specific client queries. Neither SIHL nor any of its affiliates, group companies, directors, employees, agents or representatives shall be liable for any damages whether direct, indirect, special or consequential including lost revenue or lost profits that may arise from or in connection with the use of the information. Past performance is not necessarily a guide to future performance. The disclosures of interest statements incorporated in the Information provided by SMS, report or in newsletter are provided solely to enhance the transparency and should not be treated as endorsement of the views expressed in the report. The analyst for this report certifies that all of the views expressed in this report accurately reflect his or her personal views about the subject company or companies and its or their securities, and no part of his or her compensation was, is or will be, directly or indirectly related to specific recommendations or views expressed in this report.

About Us:

Shah Investor's Home Ltd (SIHL) is an ISO 9001:2008 Certified financial Services Company established in 1994 at Ahmadabad, Gujarat. Customer satisfaction is guaranteed through our diversified product portfolio, professional management and customer first attitude. SIHL was the first broking house in Gujarat with membership in National Securities Depository Ltd (NSDL) and was the first broking name providing services in NSE F&O in Ahmedabad. Today, SIHL ranks among the top most players in Gujarat in retail stock broking area with 45 branches, 350 franchisee across India and providing service to more than 1,25,000 clients.